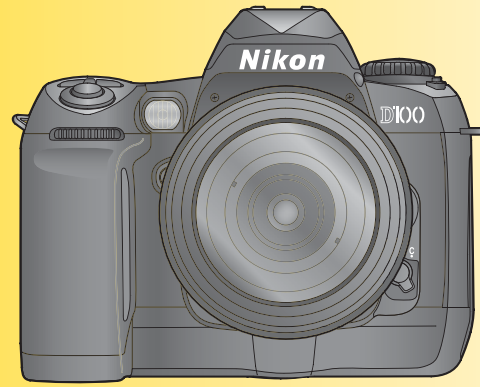


Nikon D100

Digital Camera

Quick Start Guide



This guide gets you up and running with your Nikon digital camera at the most basic "point-and-shoot" settings. Once you have taken a few shots, read the reverse side of this sheet for information on copying pictures to your computer using Nikon View 5.

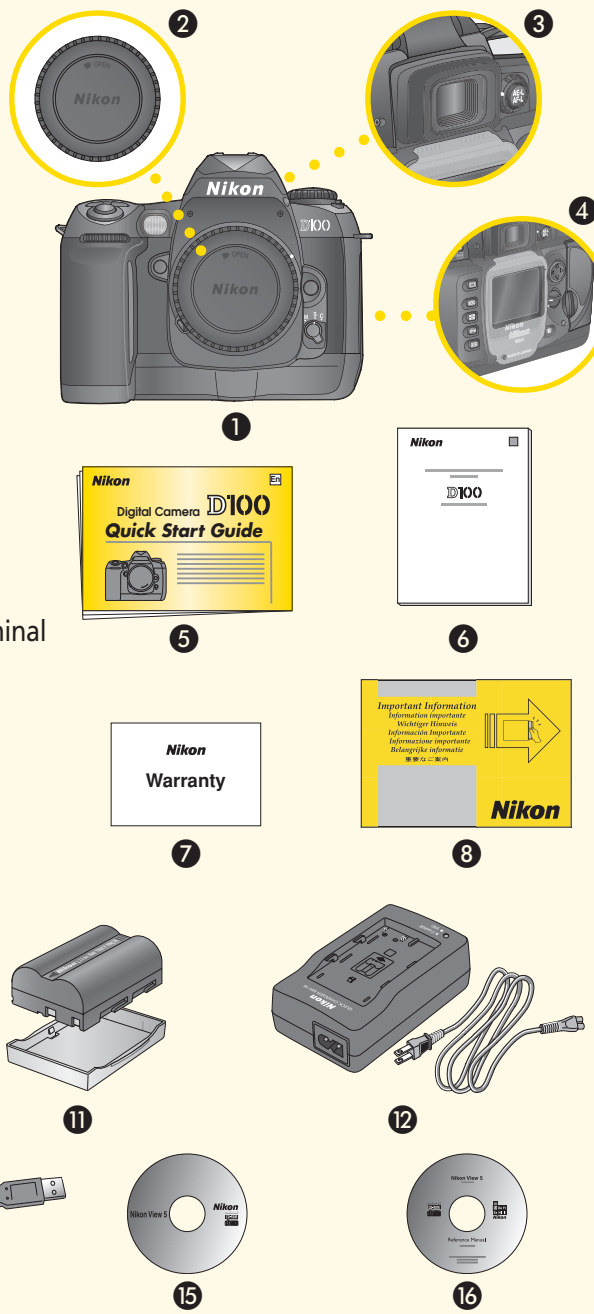
For complete information on using the D100, refer to the *Nikon Guide to Digital Photography* provided with your camera.

Unpack the camera

Be sure all items listed here were included with your camera.

NOTE: Memory cards are sold separately.

- 1 D100 camera
- 2 BF-1A body cap (attached to camera)
- 3 DK-10 Viewfinder eyepiece cup (attached to camera)
- 4 BM-2 LCD monitor cover (attached to camera)
- 5 Quick Start Guide (this guide)
- 6 Nikon Guide to Digital Photography
- 7 Warranty
- 8 Important Information
- 9 DK-5 eyepiece cap
- 10 AN-D100 strap
- 11 EN-EL3 rechargeable li-ion battery with terminal cover (instruction manual included)
- 12 MH-18 quick charger with power cable (instruction manual included)
- 13 EG-D100 video cable
- 14 UC-E4 USB cable
- 15 Nikon View 5 CD-ROM
- 16 Nikon View 5 Reference Manual CD-ROM



Use Only Nikon Brand Electronic Accessories

Your Nikon D100 digital camera is designed to the highest standards and includes complex electronic circuitry. Only Nikon brand electronic accessories (including battery chargers, batteries, and AC adapters) certified by Nikon specifically for use with your Nikon digital camera are engineered and proven to operate within the operational and safety requirements of this electronic circuitry.

THE USE OF NON-NIKON ELECTRONIC ACCESSORIES COULD DAMAGE YOUR CAMERA AND MAY VOID YOUR NIKON WARRANTY.
For more information about Nikon brand accessories, contact your local authorized Nikon dealer.

To Users of Digital Cameras with Interchangeable Lenses: Foreign Matter on the CCD

Nikon takes every possible precaution to prevent foreign matter from coming into contact with the CCD during production and shipping. The D100, however, is designed to be used with interchangeable lenses, and foreign matter may enter the camera when lenses are removed or exchanged. Once inside the camera, this foreign matter may adhere to the CCD, where it may appear in photographs taken under certain conditions. To prevent foreign matter from entering the camera, do not exchange lenses in dusty environments. To protect the camera when no lens is in place, be sure to replace the body cap provided with the camera, being careful to first remove all dust and other foreign matter that may be adhering to the body cap.

Should foreign matter find its way onto the CCD, clean the CCD as instructed in the camera manual or have the CCD cleaned by authorized Nikon service personnel. Photographs affected by the presence of foreign matter on the CCD can be retouched using the clean image options available in some third-party imaging software.

Charge the battery

Charge the EN-EL3 battery using the MH-18 quick charger provided with your camera.

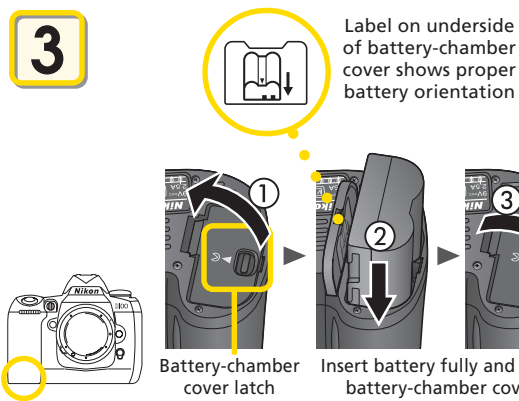
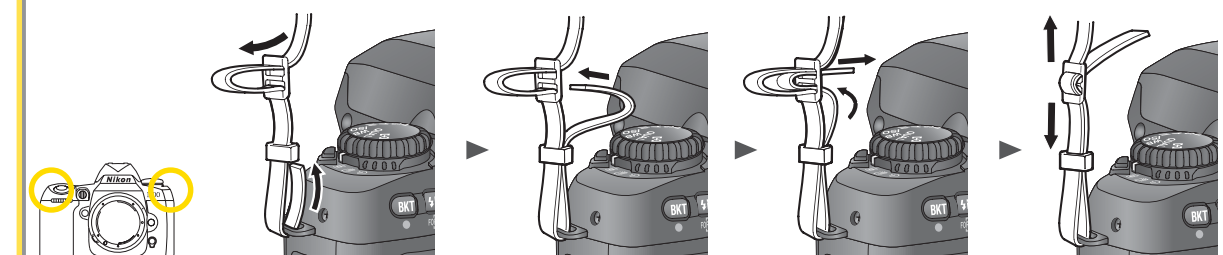
The CHARGE lamp will blink orange while charging. The CHARGE lamp will remain lit and glow orange when charging is complete.

An exhausted battery will take approximately two hours to recharge.

For details, see the documentation provided with your battery and charger.

Attach the strap

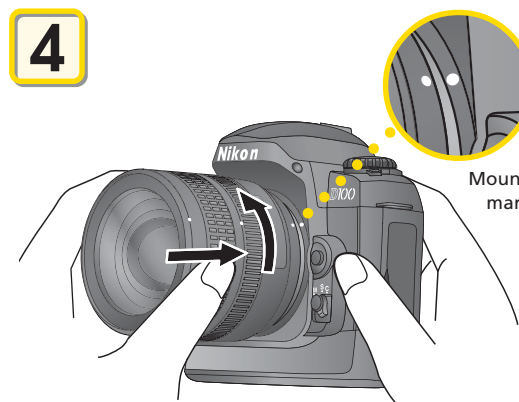
Attach the camera strap to the inlets on both sides of the camera body as shown.



Insert the battery

- 1 Turn the camera off.
- 2 Slide the battery-chamber cover latch toward the \Rightarrow mark and open the battery-chamber cover (1). Slide the battery into the battery chamber as shown (2). Close the battery-chamber cover (3).
- 3 Turn the camera on and check the battery level in the control panel.

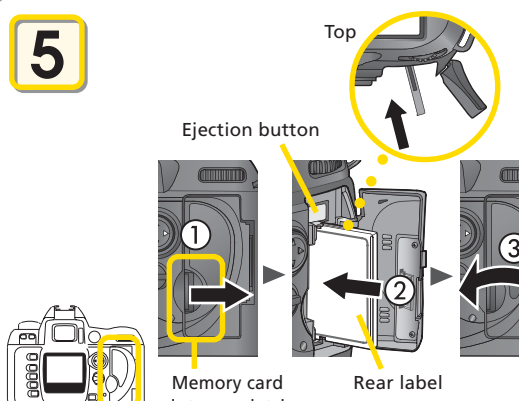
After inserting the battery, set the date and time (see the lower right corner of this guide).



Attach a lens (available separately)

- 1 Turn the camera off.
- 2 Keeping the mounting marks aligned as shown left, position the lens in the camera's bayonet mount. Avoid pressing the lens-release button and rotate the lens counterclockwise until it clicks into place.
- 3 Lock aperture at the minimum setting (highest f/-number). This step is not necessary for type G lenses.

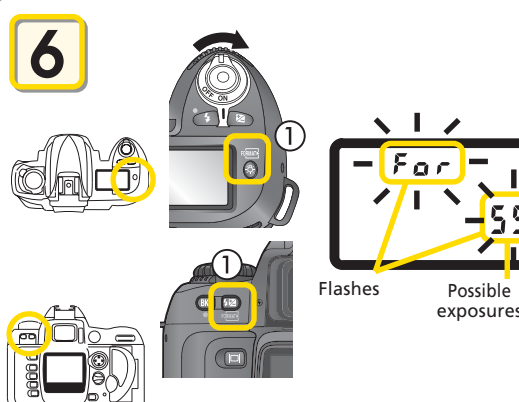
To take full advantage of the features offered by the D100, use a type G or D CPU Nikkor lens.



Insert a memory card (available separately)

- 1 Turn the camera off and unlatch and open the card-slot cover (1).
- 2 Insert the memory card with the rear label toward the monitor, sliding the card in until it is fully seated in the contacts at the back of the slot (2) and the eject button pops up. Close the card slot cover (3).

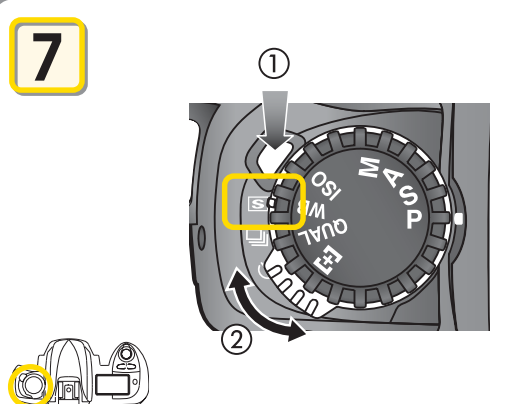
The memory card slot slopes slightly toward the monitor. Match the angle of the memory card slot when inserting memory cards.



Format the memory card

Note that formatting memory cards permanently deletes any data they may contain.

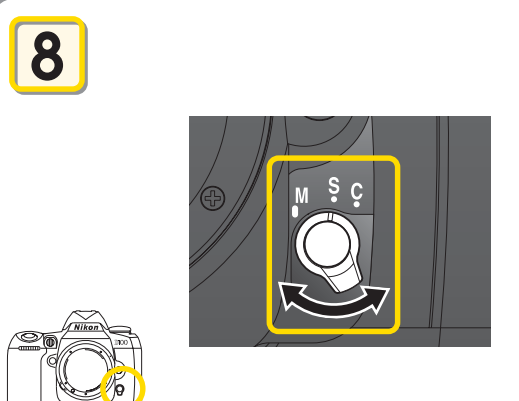
- 1 Turn the camera on.
- 2 Hold the \Rightarrow (MENU) and \Rightarrow (INFO) buttons down together for approximately two seconds (1). F and the possible number of exposures will flash in the control panel display (2).
- 3 Push the \Rightarrow (MENU) and \Rightarrow (INFO) buttons again to format the card. During formatting, the letters F and will appear in the frame-count display. When formatting is complete, the frame-count display will show the possible number of exposures.



Set the shooting mode to S (single frame)

The D100 offers three shooting modes: single frame, continuous, and self-timer. To select single frame (the default setting), hold down the shooting-mode dial lock release (1) and rotate the shooting mode dial to S (2).

For more information on shooting mode, see page 41 of the *Guide to Digital Photography*.

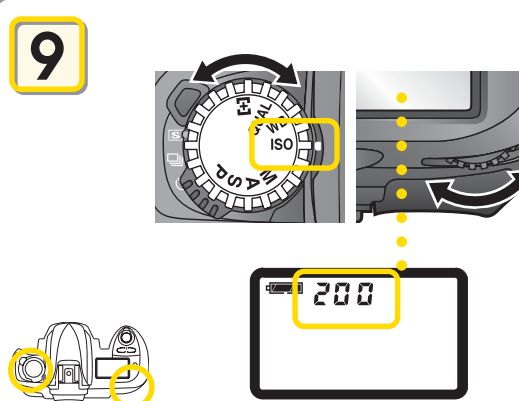


Set the focus mode to S (single-servo autofocus)

In single-servo autofocus, the camera will focus when the shutter-release button is pressed halfway. Focus will lock while the shutter-release button is pressed halfway. Photographs can only be taken when the camera is in focus.

To select single-servo autofocus (the default setting), rotate the focus-mode dial until it clicks into place pointing to S .

For more information on focus mode, see page 63 of the *Guide to Digital Photography*.

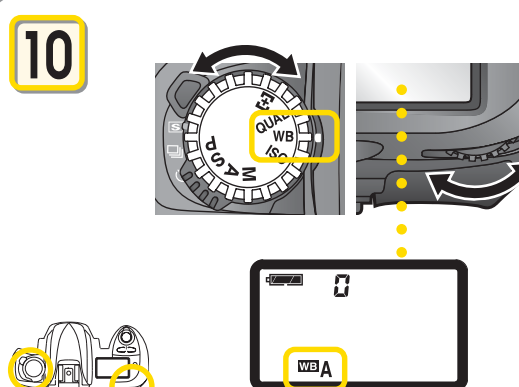


Set sensitivity (ISO equivalency) to ISO 200 equivalent

Sensitivity (the digital-camera equivalent of film speed) can be set between values approximately equivalent to ISO 200 and ISO 1600 in increments of 1/3 EV.

To set sensitivity to a value approximately equivalent to ISO 200 (the default value), turn the function dial to ISO and rotate the main command dial until 200 is displayed in the control panel.

For more information on sensitivity, see page 48 of the *Guide to Digital Photography*.

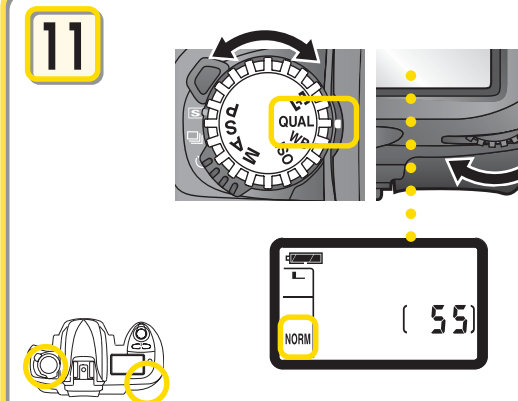


Set white balance to A (auto)

The D100 offers a choice of eight white balance modes according to the color temperature of the light source.

To choose auto white balance (the default setting), turn the function dial to WB and rotate the main command dial until A (auto) is displayed in the control panel.

For more information on white balance, see page 50 of the *Guide to Digital Photography*.

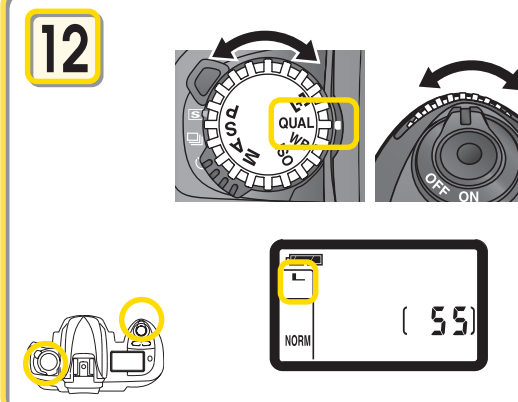


Set image quality to NORM (JPEG normal)

Turn the function dial to QUAL and rotate the main command dial until NORM (JPEG normal, the default setting) is displayed in the control panel.

For more information on image quality, see page 44 of the *Guide to Digital Photography*.

The number of possible exposures depends on the capacity of the memory card used.

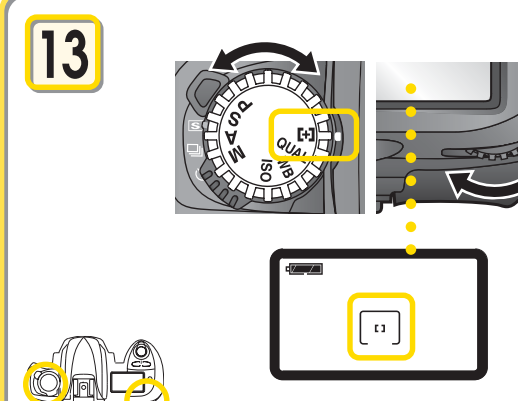


Set image size to L (large)

Turn the function dial to QUAL and rotate the sub-command dial until L (large, the default setting) is displayed in the control panel.

For more information on image size, see page 46 of the *Guide to Digital Photography*.

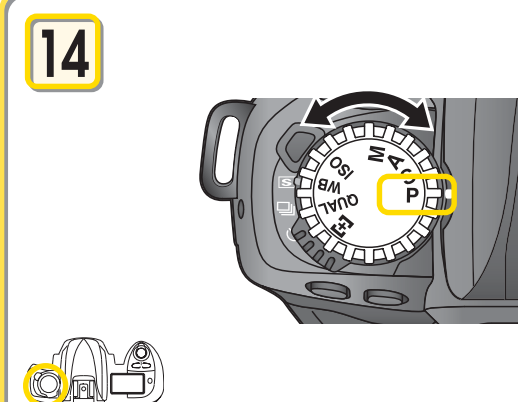
The number of possible exposures depends on the capacity of the memory card used.



Set AF-area mode to [] (single-area AF)

Turn the function dial to \Rightarrow and rotate the main command dial until [] (single-area AF, the default setting) is displayed in the control panel.

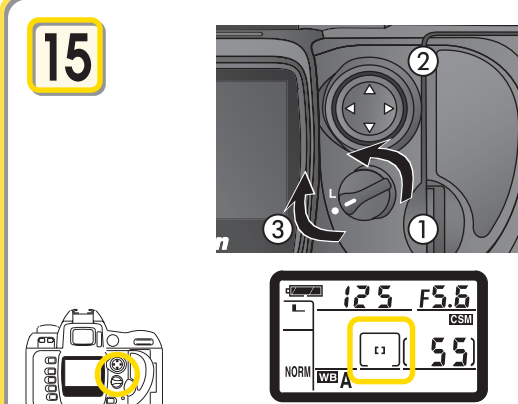
For more information on AF-area mode, see page 65 of the *Guide to Digital Photography*.



Set the function dial to P (auto multi program exposure mode)

Turn the function dial to P (auto multi program exposure mode, the default setting).

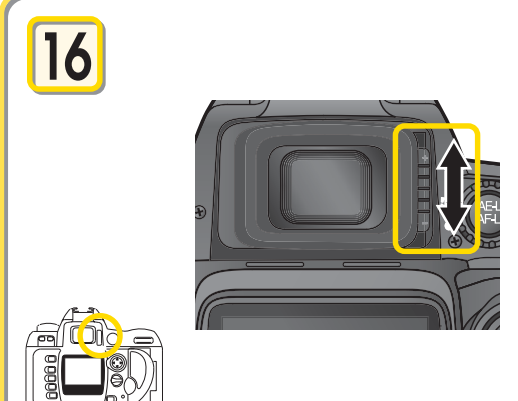
For more information on exposure mode settings, see page 76 of the *Guide to Digital Photography*.



Choose the center focus area

- 1 Turn the multi selector lock dial to \bullet to unlock the multi selector (1).
- 2 Use the multi selector to select the center focus area (the default setting) in the viewfinder or control panel (2).
- 3 Return the multi selector lock dial to L (3). While the multi selector lock dial is in this position, the selected focus area will not change when the multi selector is pressed. The multi selector can still be used to navigate the camera menus.

The number of possible exposures depends on the capacity of the memory card used.

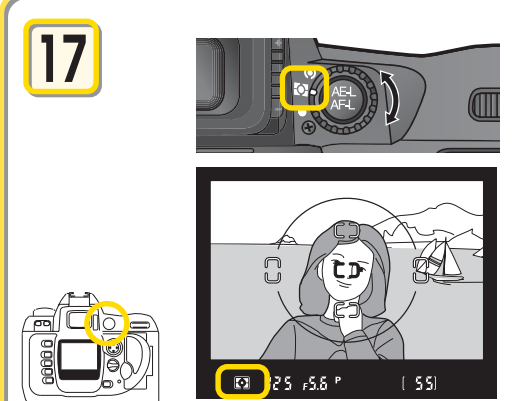


Focus the viewfinder

To adjust viewfinder focus, slide the diopter adjustment control up and down until the focus brackets in the viewfinder are in sharp focus.

If necessary, you can remove the rubber viewfinder eyepiece cup when adjusting diopter; when replacing the cup, the lettered face should be down.

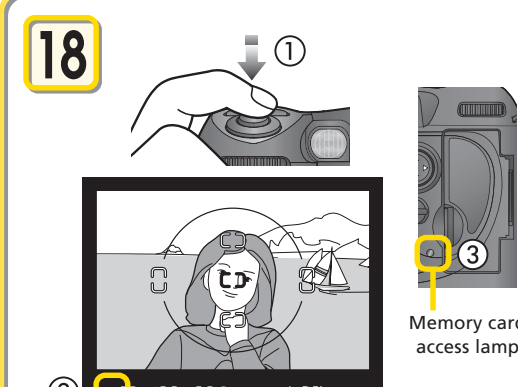
When operating the diopter control with your eye to the viewfinder, care should be taken to avoid accidentally putting your fingers or fingernails in your eye.



Set the metering selector to matrix metering

Set the metering selector set to \Rightarrow (matrix metering – the default setting). A \Rightarrow icon will appear in the viewfinder when the shutter-release button is pressed halfway.

For more information on metering, see page 75 of the *Guide to Digital Photography*.



Frame your photograph and shoot

Compose your photograph with your subject in the center of the frame and press the shutter-release button halfway (1). Confirm that the in-focus indicator (\bullet) glows steadily in the viewfinder (2).

Press the shutter-release button the rest of the way down to take the photograph. While the photograph is being recorded to the memory card, the card access lamp next to the memory card slot will light (3).

Do not turn the camera off or remove the memory card until the lamp has gone out.

Playing Photographs Back

Photographs can be played back in the monitor any time after shooting, allowing you to check the results of earlier photographs and choose a better angle or adjust lighting for your next shot. Unwanted pictures can be deleted instantly to make room for more photographs on the memory card.

Viewing Photographs

- 1 Insert the memory card containing the photos you want to view into the camera.

- 2 Turn the camera on.

- 3 Press the \Rightarrow button.

- 4 The most recent photograph on the memory card will be displayed in the monitor.

- Pressing the \Rightarrow button or the shutter-release button halfway while viewing photographs will turn the monitor off.

- The monitor will turn off automatically to save power if no operations are performed for the time specified (default 20 s) in Custom Setting 6 (Monitor Off).

- When the monitor turns off, press the \Rightarrow button again to return to playback mode.

- 5 Press the multi selector down to view photos in the order recorded, up to go back.

Viewing Multiple Photographs

By pressing the \Rightarrow button and rotating the main command dial, you can display images in "contact sheets" (thumbnails) as follows: single image \leftrightarrow four thumbnails \leftrightarrow nine thumbnails \leftrightarrow single image.

For details, see the *Guide to Digital Photography*, page 116.

Zooming in for a Closer Look

- 1 If no image is displayed in the monitor, press the \Rightarrow button.

- 2 Press the \Rightarrow button to zoom in on the image displayed in single-image playback or on the image currently selected in thumbnail playback.

- 3 You can also zoom in on the image by pressing the \Rightarrow button and rotating the main command dial to the right. Press the \Rightarrow button and rotate the main command dial to the left to zoom out.

Use the multi selector to view areas of the image not visible in the monitor.

- 4 Press \Rightarrow to cancel zoom.

Deleting Photographs

- 1 If no image is displayed in the monitor, press the \Rightarrow button.

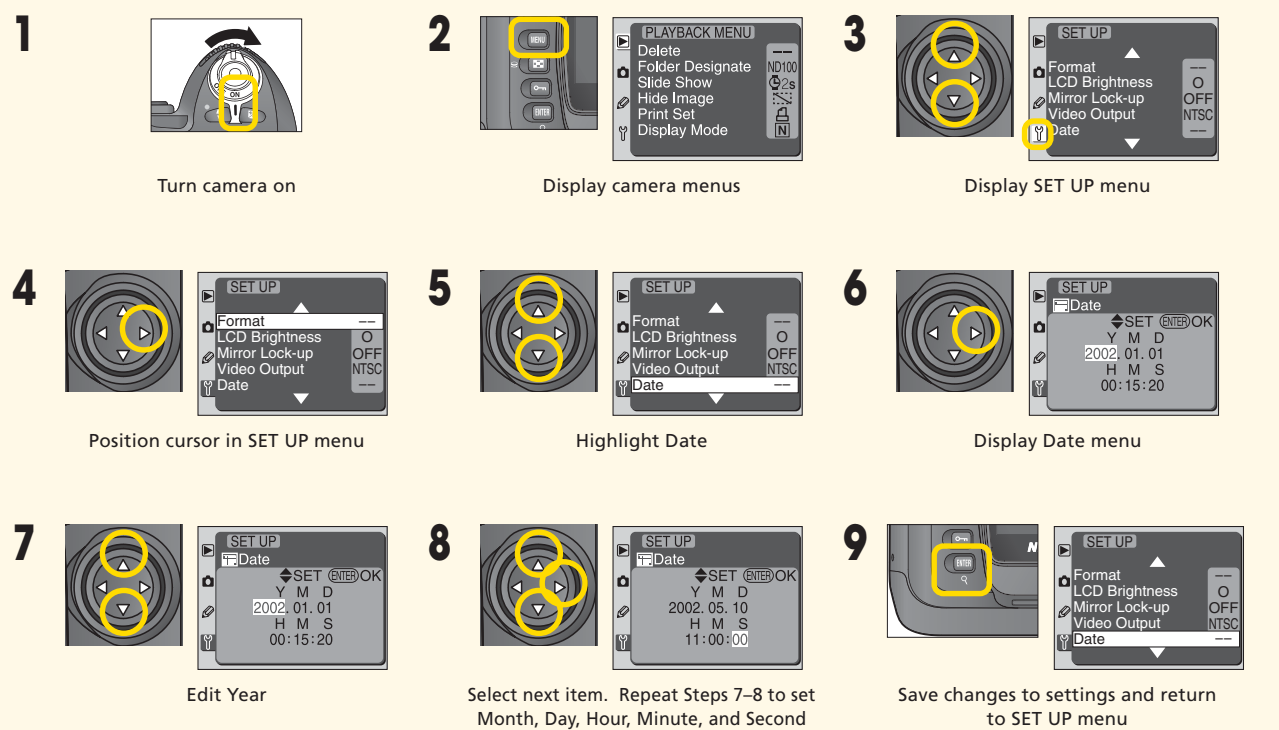
- 2 Press the multi selector up or down to display the photo you want to delete.

- 3 Press the \Rightarrow button.

- 4 A confirmation dialog box is displayed. Press the multi selector up or down to highlight YES, press the \Rightarrow button to select and delete the photo.

Set the Time and Date

Follow the steps below to set the time and date. The time and date will be recorded with all pictures. If you have not set the time and date, (the \Rightarrow icon in the control panel will flash), the time and date may not be correct but will still be recorded. For more information on the camera's internal clock-calendar, see page 19 of the *Guide to Digital Photography*.



► Viewing Pictures on Your Computer Using Windows

OS: Pre-installed versions of Windows XP Home Edition/Professional, Windows 2000 Professional, Windows Millennium Edition (Me), Windows 98 Second Edition (SE)

So that you can enjoy your Nikon digital camera to the full, Nikon offers the following software to help you sort, manipulate, print, and share your pictures on a computer:

• Nikon View 5:

Use this program to copy pictures from the camera or memory card to your computer. Once transferred, you can view pictures at full size, print them, and organize them into folders on your hard disk.

• QuickTime:

Nikon View and FotoStation use this program to play back movies.

Depending on the version of Nikon View 5 installed, the installation process, dialogs and messages displayed may differ from those described here.

To Users of Windows XP Home Edition/Professional and Windows 2000 Professional

When installing, uninstalling, or using Nikon View 5, log on as the "Computer administrator" (Windows XP Home Edition/Professional) or "Administrator" (Windows 2000 Professional).

Before Connecting the Camera

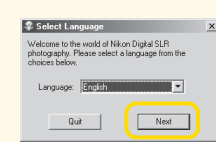
Before connecting your camera to a computer, make sure that Nikon View 5 is installed.

Install Software

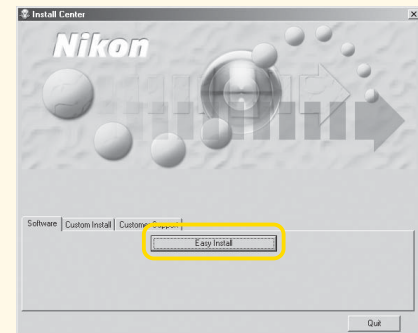
a Turn the computer on and wait for the operating system to start up.

b Insert the Nikon View 5 installer CD into a CD-ROM drive.

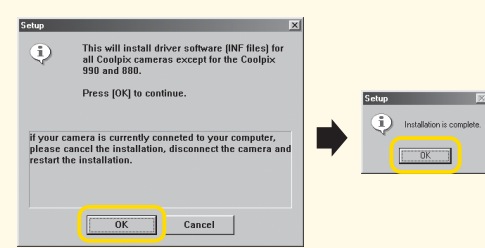
c The dialog shown at right will be displayed. Select a language from the pop-up menu and click **Next**.



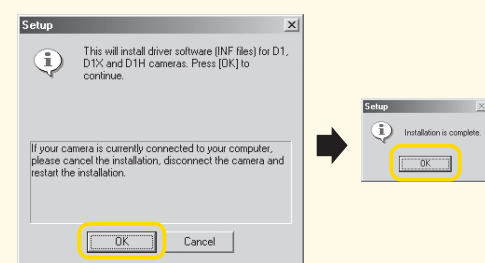
d The Install Center program will be launched automatically. Click **Easy Install** to install QuickTime 5.0.2, and Nikon View 5. There may be some delay (up to thirty seconds depending on the system) between each installation.



- If you are using Windows 98SE, the dialog shown at right will be displayed when you click Easy Install. Click **OK** to begin installation of the Coolpix Camera Driver, and click **OK** again once installation is complete.



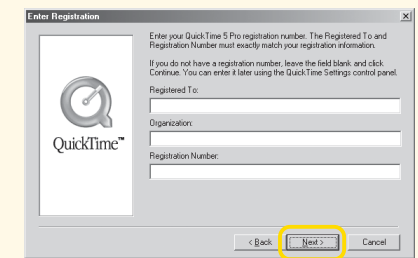
If you are using any operating system other than Windows 98SE, the dialog shown at right will be displayed when you click Easy Install. Click **OK** to begin installation of the D1, D1x and D1h Camera Driver, and click **OK** again once installation is complete.



(Under Windows 98SE installation of the D1, D1x and D1h Camera Driver follows installation of the Coolpix Camera Driver, above.)

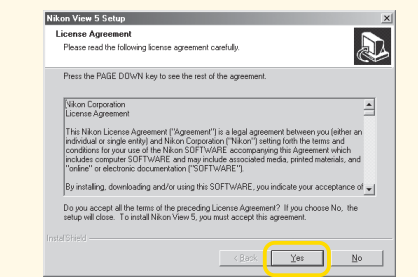
e QuickTime 5.0.2

Installation opens with the dialog shown at right. The three fields "Registered To," "Organization," and "Registration Number" should be left blank. Click **Next**. Follow the on-screen instructions to complete installation.

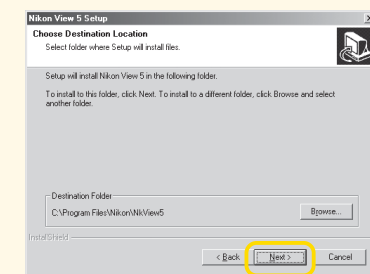


f Nikon View 5

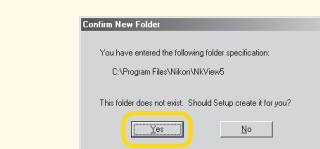
Installation of Nikon View 5 starts with the license agreement. Be sure you have read and understood the contents of the license agreement before clicking **Yes** to proceed to the next step.



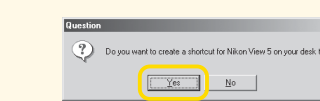
g The destination folder for Nikon View 5 will be displayed. Click **Next**.



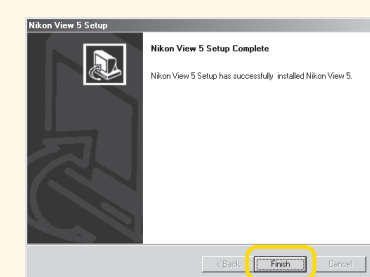
h Click **Yes** to create a new folder for Nikon View 5.



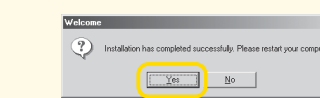
i Click **Yes** to create a shortcut to Nikon View 5 on the desktop.



j Click **Finish** to complete installation.



k Click **Yes** to restart the computer.

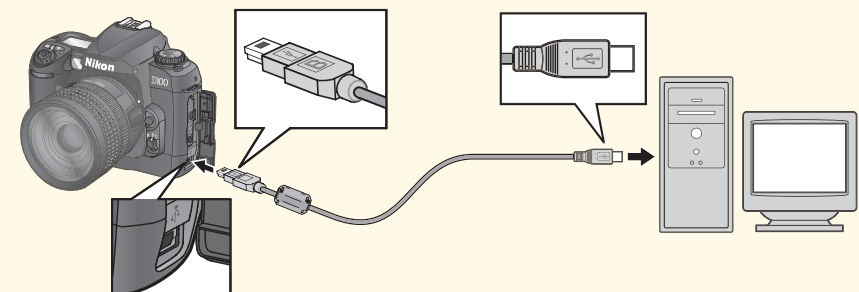


l Once the computer has restarted, remove the Nikon View 5 installer CD from the CD-ROM drive.

If the Welcome program starts up again after you have restarted the computer, click **Quit** to exit the Welcome program and then remove the CD from the CD-ROM drive.

Copy Pictures to Your Computer

a Turn the camera off. Connect the camera to your computer as shown in the illustration, using the USB cable provided.

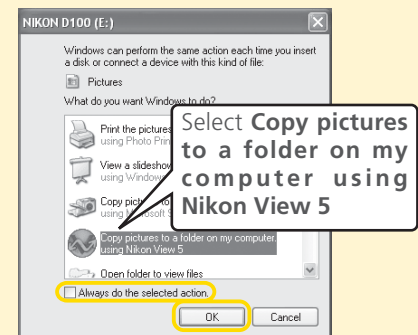


b Turn the camera on. Nikon View 5 will automatically detect the camera and display the Nikon Transfer window. Click the [Transfer] button.

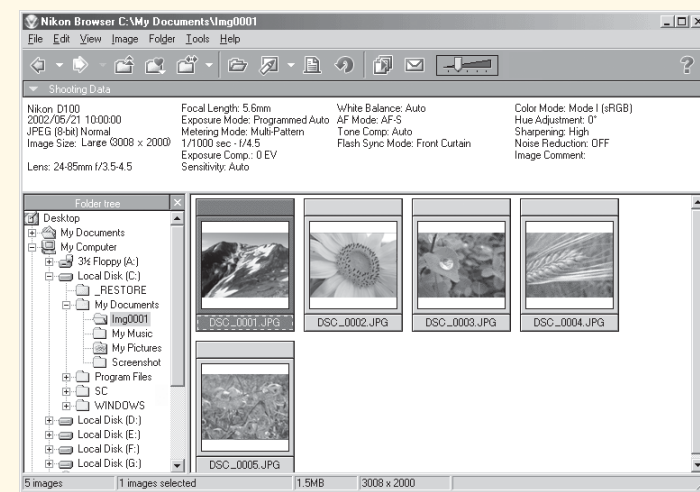


AutoPlay (Windows XP)

When you turn the camera on, the dialog shown at right will be displayed. Select **Copy pictures to a folder on my computer using Nikon View 5** and click **OK** to start Nikon View 5. To bypass this dialog in the future, check **Always do the selected action**.



c When all pictures have been copied, the Nikon Browser window will be displayed in the computer monitor.

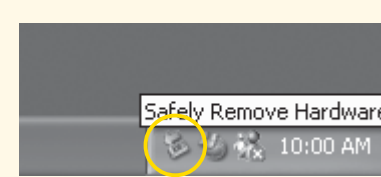


By default, pictures will be copied to the folder "Imgnnnn" in the My Documents folder or My Pictures folder, where *nnnn* is a four-digit number (starting from 0001) assigned automatically by Nikon View 5.

d After confirming that transfer is complete, remove the camera from the system as described below.

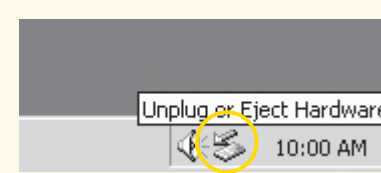
Windows XP Home Edition/Professional

Click the "Safely Remove Hardware" icon () in the taskbar and select **Safely remove USB Mass Storage Device** from the menu that appears.



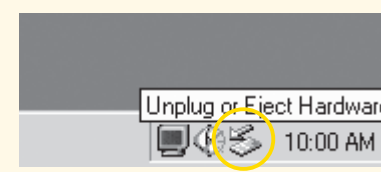
Windows 2000 Professional

Click the "Unplug or Eject Hardware" icon () in the taskbar and select **Stop USB Mass Storage Device** from the menu that appears.



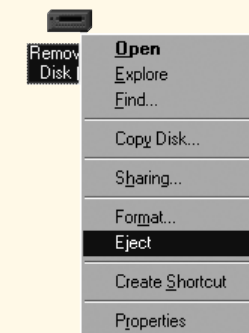
Windows Millennium Edition (Me)

Click the "Unplug or Eject Hardware" icon () in the taskbar and select **Stop USB Disk** from the menu that appears.

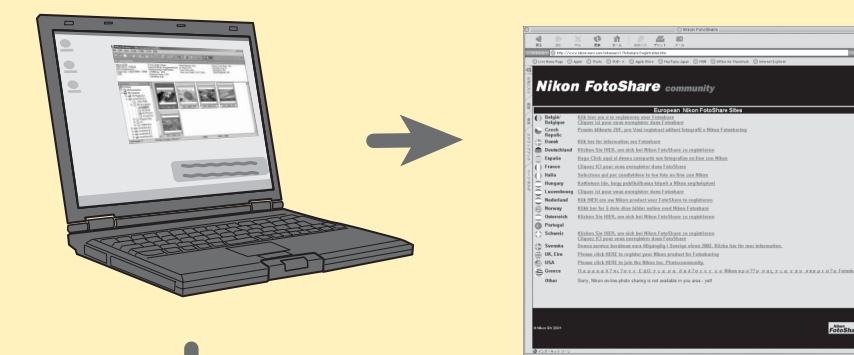


Windows 98 Second Edition (SE)

In My Computer, click with the right mouse button on the removable disk corresponding to the camera and select **Eject** from the menu that appears.



Enjoying Pictures on Your Computer



Post pictures on your web site. Make an on-line photo album at <http://www.nikonfotoshare.com/>

European customers can share their pictures on-line in password-protected "photo albums." Once you have used the simple on-line tools to upload your pictures, you can send invitations to selected guests to view your album at their leisure. You can even order prints on-line.

Make prints on your personal color printer.

► Viewing Pictures on Your Computer Using a Macintosh

OS: Mac OS 9.0, Mac OS 9.1, Mac OS 9.2, Mac OS X (10.1.2 or later)

So that you can enjoy your Nikon digital camera to the full, Nikon offers the following software to help you sort, manipulate, print, and share your pictures on a computer:

• Nikon View 5:

Use this program to copy pictures from the camera or memory card to your computer. Once transferred, you can view pictures at full size, print them, and organize them into folders on your hard disk.

• QuickTime:

Nikon View and FotoStation use this program to play back movies.

Depending on the version of Nikon View 5 installed, the installation process, dialogs and messages displayed may differ from those described here.

Before Connecting the Camera

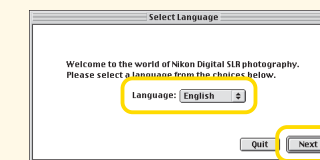
Before connecting your camera to a computer, make sure that Nikon View 5 is installed.

Install Software

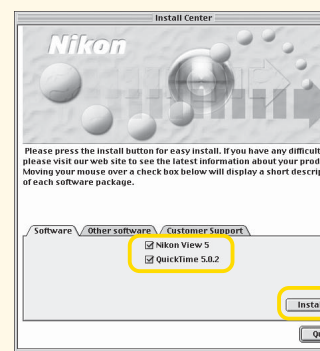
a Turn the computer on and wait for the operating system to start up. Insert the Nikon View 5 installer CD into a CD-ROM drive. The Nikon View Welcome program will be launched automatically.

Mac OS X (10.1.2 or later)

Nikon View 5 will not start automatically. Double-click the Nikon View 5 CD-ROM icon on the desktop, then double-click the Welcome icon.



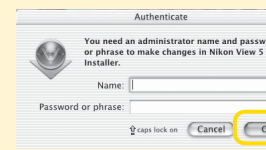
b The dialog shown at right will be displayed. Select a language from the pop-up menu and click **Next**.



c The Install Center program will launch automatically. Click **Install** to begin installation of all the software checked in the Software tab. By default, installation includes QuickTime 5.0.2, and Nikon View 5 (the Mac OS X installation does not include QuickTime 5.0.2).

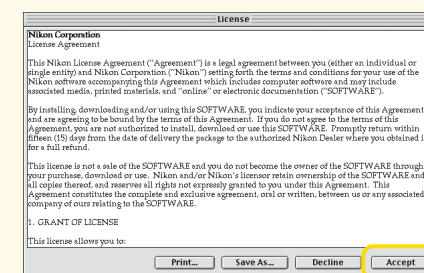
Mac OS X (10.1.2 or later)

If you are using Mac OS X, the Authenticate dialog will be displayed before the Nikon View 5 installer. Enter your administrator name and password, and then click **OK**.

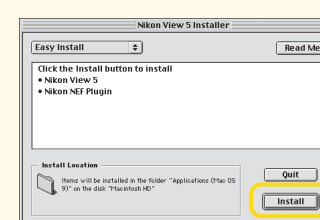


d Nikon View 5

The license agreement shown at right will be displayed. Be sure you have read and understood the agreement before clicking **Accept**. The ReadMe file will then be displayed. Take a few moments to read this file which may contain important information that could not be included in the manual.

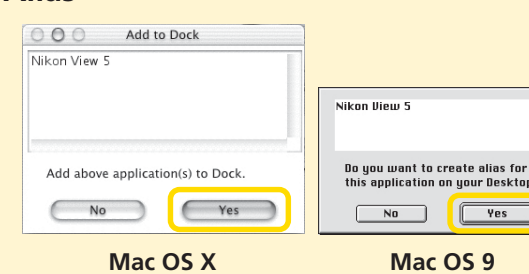


e Click **Install** to proceed with installation.



Add to Dock/Create an Alias

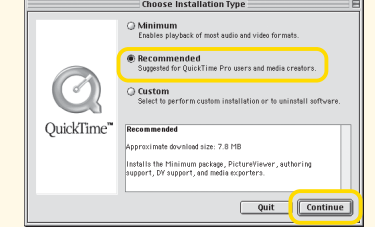
After you click **Install**, a dialog will be displayed where you can click **Yes** to add Nikon View 5 to the Dock (Mac OS X) or create an alias to Nikon View 5 on the desktop (Mac OS 9).



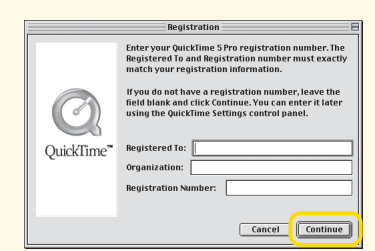
f Click **Quit** to complete installation of Nikon View 5.

g QuickTime 5.0.2

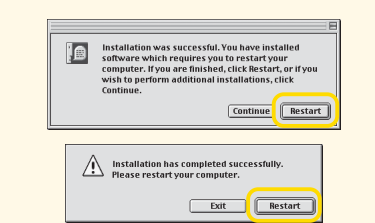
Installation of QuickTime 5.0.2 opens with a welcome dialog. Click **Continue** and follow the on-screen instructions to accept the license agreement. When the dialog shown at right is displayed, select **Recommended** and click **Continue**.



The Registration dialog will be displayed. No registration number is required; leave the registration information blank and click **Continue**. Follow the on-screen instructions to complete installation.



h One of the two dialogs shown right will be displayed. Click **Restart** to restart your computer.

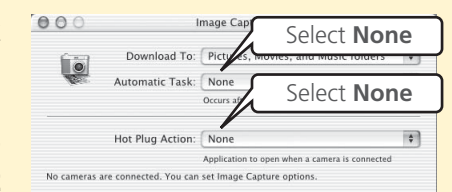


i Once the computer has restarted, remove the Nikon View 5 installer CD from the CD-ROM drive. If the Welcome program starts up again after you have restarted the computer, click **Quit** to exit the Welcome program and then remove the CD from the CD-ROM drive.

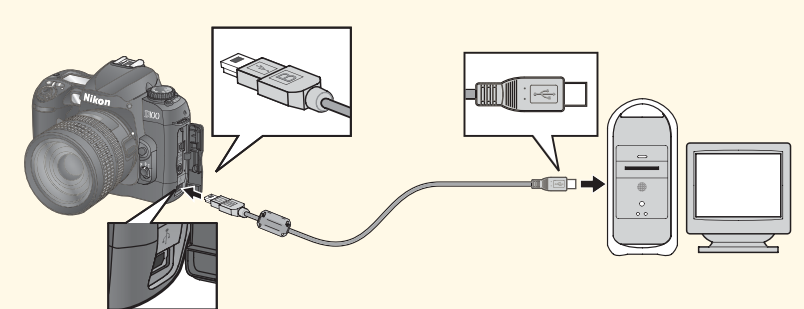
Copy Pictures to Your Computer

Mac OS X (10.1.2 or later)

Before turning the camera on, select **Applications** from the **Go** menu and double-click the **Image Capture** icon. The dialog shown at right will be displayed. Select **None** from the **Hot Plug Action** menu and close the Image Capture dialog. If you install Apple iPhoto software after you install Nikon View 5, please repeat this step to prevent both iPhoto and Nikon View 5 from starting when you connect your camera.

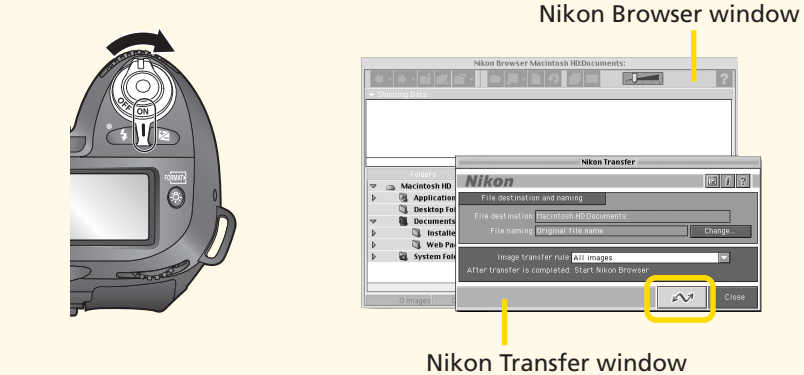


a Turn the camera off. Connect the camera to your computer as shown in the illustration, using the USB cable provided.

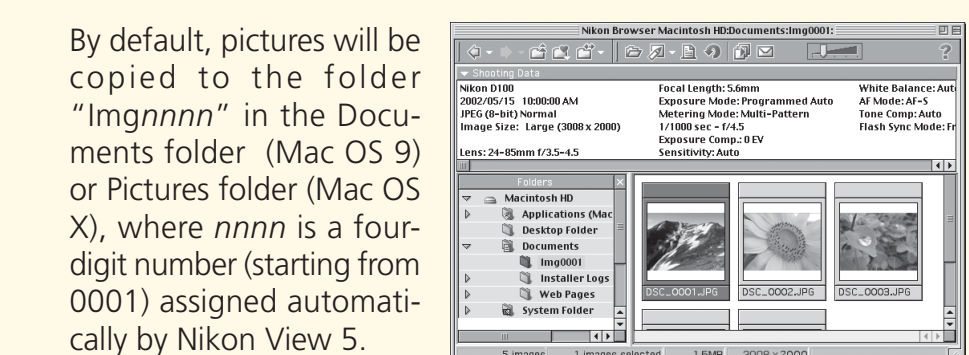


b Turn the camera on. Nikon View 5 will automatically detect the camera and display the Nikon Transfer window. Click the [Transfer] button.

On a Macintosh, Nikon Transfer will start up after Nikon Browser has started.



c When all pictures have been copied, they will be displayed in the Nikon Browser window.



d Be sure to drag the "NIKON D100" (in Mac OS X, "NIKON D100") disk corresponding to the camera into the Trash before turning the camera off and disconnecting the USB cable.

